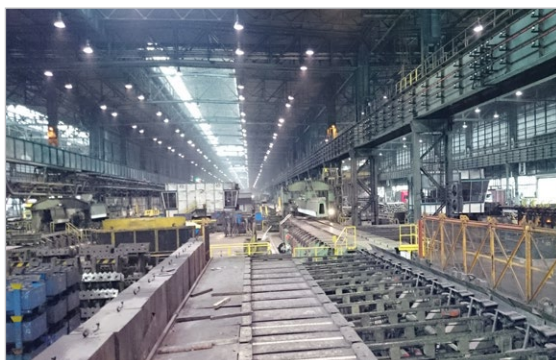


Reference

Transfer Car

Spring Reel



Application

Transfer Car for joining of wires in a steel plant

Country

Czech Republic

City

Ostrava

Project installation date

2014

Representative office

Conductix-Wampfler s.r.o. [CZ]

Operator

ArcelorMittal a.s.

Technical requirement[s]

Energy and Compressed air supply to a transfer car

System course

Linear

Travel distance [Load]

25 m

Product[s]

- Spring Cable Reel, Program 6100
- Spring Hose Reel, Programm 6100

Cable[s]

4G6

Hose[s]

1TE10

Winding length

- 26 m [Spring Cable Reel]
- 24 m [Spring Hose Reel]

